

EL

SIEMENS



"TANTALUM"

LAMPS

LONGEST

CHEAPEST

SIEMENS BROTHERS

DYNAMO WORKS LIMITED

INCANDESCENT LAMP AND FITTINGS DEPARTMENT

TYSSSEN STREET, DALSTON, N.E.

Telephones : **CENTRAL 8387, 8388, 8389 ; DALSTON 2440** (Three Lines.)

Telegraphic Address : **"SIEMODYN, LONDON."**

Head Office : **CAXTON HOUSE, WESTMINSTER.**

Telephone : **GERRARD 860. Telegrams : "SIEMBRALOS, LONDON."**

"TANTALUM" LAMPS

"WOTAN" (ONEWATT) LAMPS

"WOTAN" (ONEWATT) BATTERY LAMPS

CARBON LAMPS

GLASS & METAL REFLECTORS & SHADES

ELECTRIC LIGHT FITTINGS

ELECTRIC SIGNS

HOUSE TRANSFORMERS

LUMINOUS RADIATORS.

Please send enquiries and orders to our nearest Branch.

London

Supplies Dept.
94, Upper Thames St. E.C. 4
Telephone: 8270 London Wall
Telegraphic Address: Siemens, London

Birmingham

Central House, New Street
Telephone: 4407 Central (2 lines)
Telegraphic Address: Siemens, Birmingham

Bristol

40, Bridge Street
Telephone: 111
Telegraphic Address: Siemens, Bristol

Cardiff

50, St. Mary Street
Telephone: 111 National
Telegraphic Address: Siemens, Cardiff

Glasgow

60, Waterman Street
Telephone: 4001, 4002 Central
Telegraphic Address: Siemens, Glasgow

Manchester

160, Deansgate
Telephone: 7081
Telegraphic Address: Siemens, Manchester

Newcastle-on-Tyne

10, A. Ringwood Building
Telephone: 203, 204, 205
Telegraphic Address: Siemens, Newcastle-on-Tyne

Sheffield

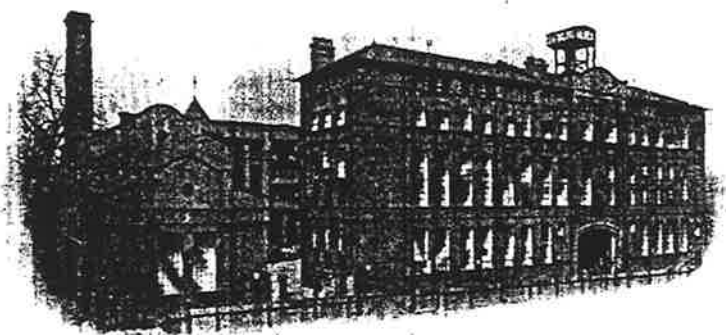
10, High Street
Telephone: 4231 Central (2 lines)
Telegraphic Address: Siemens, Sheffield

SIEMENS “TANTALUM”

DRAWN WIRE

METAL LAMPS

PRICE LIST No. T L 1, JANUARY, 1912.



The “Tantalum” Lamp Works at Dalston, London, N.E., in which
“Tantalum” Lamps have been manufactured since 1909.

CONTENTS.

	PAGE
Pear Shape Lamps, 20-160 Volts	2
“ “ “ 180-250	3
Bulb Dimensions	3
Round Bulb Lamps, 20-250 Volts	4
Technical Details, etc.	5
Traction Lamps	6, 7
Tubular Lamps	8
Focus Lamps	8
Flame Candle Lamps	9
Lacquers and Varnishes	9
Lux Candle Lamps	10
Kingolite Candle Lamps	11
Installations	12-16
Terms of Sale and Re-sale	17

**COMBINE STRENGTH WITH
HIGH EFFICIENCY.**



SIEMENS "TANTALUM" METAL LAMPS

PEAR SHAPE BULBS

5-50 C.P.

20-160 Volts.

FOR SERIES OR
SINGLE BURNING.

(Half Full Size).
BULB T 2.

VOLTAGE	C.P. (British)	EFFICIENCY	BULB	PRICE EACH
20-40	5, 8, 10, 16, 25	1.7 Watts per C.P.	T 0	1/6
50-60	8, 10	1.7 Watts per C.P.	T 0	1/6
65-80	8, 10	" " "	T 0	
90-120	8, 10	" " "	T 0	
50-80	16	1.7 Watts per C.P.	T 1	2/-
90-160	16	" " "	T 1	
90-120	16	2.2 " "	T 2	
50-130	25	1.7 Watts per C.P.	T 2	2/-
140-160	25	" " "	T 2	
60-130	32	1.7 Watts per C.P.	T 3	2/-
140-160	32	" " "	T 3	
90-130	50	1.7 Watts per C.P.	T 4	2/-
140-160	50	" " "	T 4	

Lamps indicated by Light Type are recommended for Direct Current Circuits only.

Totally frosted or Coloured Lamps, extra—9d. per dozen.

For Bulb Dimensions see opposite page.

Lamps supplied with any ordinary type of Cap.

**"TANTALUM" PURE DRAWN WIRE FILAMENTS ARE NOT
FRAGILE AND BURN IN ANY POSITION.**



SIEMENS "TANTALUM"

METAL LAMPS

PEAR SHAPE BULBS

16-50 C.P.

180-250 Volts.

FOR SINGLE BURNING

IN ANY POSITION.

(Half Full Size).
BULB T 3.

VOLTAGE	C.P. (British)	EFFICIENCY	BULB	PRICE EACH
180-230	16	2.0 Watts per C.P.	T 3	2/6
180-250	25	1.7 Watts per C.P.	T 3	
180-250	32	1.7 Watts per C.P.	T 3	
180-240	32	2.2 " "	T 4	
180-250	50	1.7 Watts per C.P.	T 4	

Lamps indicated by Light Type are recommended for Direct Current Circuits only.

Totally frosted or Coloured Lamps, extra 9d. per dozen.

For Bulb Dimensions see below.

Lamps supplied with any ordinary type of Cap.

TABLE OF SIZES OF BULBS.

SHAPE	TYPE	LENGTH	DIAM.	SHAPE	TYPE	LENGTH	DIAM.
Pear	T 0	4½"	2½"	Olive	K 2	3½"	1½"
Pear	T 1	4"	2½"	Olive	K 3	4"	1½"
Pear	T 2	5½"	2½"	Olive	K 4	5"	1½"
Pear	T 3	6"	2½"	Round	K 50	3"	2"
Pear	T 4	6½"	3½"	Round	K 60	3½"	2½"
Bell	N 2	4½"	2½"	Round	K 65	4½"	2½"
Tube	R 4	5½"	1½"	Round	K 75	4½"	3"
				Round	K 100	6½"	4"

**"TANTALUM" LAMPS NEED NO SPECIAL CARE
IN HANDLING.**



SIEMENS "TANTALUM" METAL LAMPS

ROUND BULBS

5-50 C.P.

(Half full Size).
BULB K 75.

20-250 Volts.

FOR SERIES OR SINGLE BURNING.

VOLTAGE	C.P. (British)	EFFICIENCY	BULB	PRICE EACH
20-40	5, 8, 10	1.7 Watts per C.P.	K 50	1 9
20-40	16, 25	" " "	K 60	
50-60	8, 10	1.7 Watts per C.P.	K 65	1 9
65-80	8, 10	" " "	K 65	2 3
90-120	8, 10	" " "	K 65	
50-80	16	1.7 Watts per C.P.	K 75	2 3
90-160	16	" " "	K 75	
90-120	16	2.2 " "	K 75	
50-130	25	1.7 Watts per C.P.	K 75	2 3
140-160	25	" " "	K 75	2 9
60-130	32	1.7 Watts per C.P.	K 100	2 3
140-160	32	" " "	K 100	2 9
90-130	50	1.7 Watts per C.P.	K 100	2 3
140-160	50	" " "	K 100	2 9
180-230	16	2.0 Watts per C.P.	K 100	
180-250	25	1.7 Watts per C.P.	K 100	2 9
180-250	32	1.7 Watts per C.P.	K 100	
180-240	32	2.2 " "	K 100	
180-250	50	1.7 Watts per C.P.	K 100	

Lamps indicated by Light Type are recommended for Direct Current Circuits only.

Totally frosted or Coloured Lamps, extra—9d. per dozen.

For Bulb Dimensions, see page 3.

Lamps supplied with any ordinary type of Cap.

"YOUR ELECTRIC LIGHT BILL HALVED!"

SIEMENS

“TANTALUM” METAL LAMPS

TRACTION TYPE

FOR
TRAM,
TUBE,
TRAIN
AND SHIP
LIGHTING.



FOR
MILLS,
FACTORIES
AND
WORK-
SHOPS.

(Half Full Size)
BULB N 2.

BELL SHAPE BULBS.

VOLTAGE	C.P. (British)	EFFICIENCY	BULB	PRICE EACH
20-40	5, 8, 10, 16, 25	1.7 Watts per C.P.	T 0	1/6
50-80	16	2.2 Watts per C.P.	N 2	} 2/-
90-135	12, 16	" " "	N 2	
90-120	25	" " "	T 3	
90-120	32	2.0 " "	T 3	
90-120	50	1.7 " "	T 4	} 2/6
180-240	32	2.2 Watts per C.P.	T 4	
180-240	50	2.0 " "	T 4	

For Tramcar Work the number of Lamps to be used in series should be stated.

All “Tantalum” Traction Lamps are suitable for Direct or Alternating Current Circuits, and are supplied with any ordinary Type of Cap.

These Lamps are now installed on many Corporation Tramway Systems, Tube Railways, Liners and Steamships of the Leading Companies, with highly satisfactory results. Full particulars of installations given on receipt of enquiry, and life guarantees made against full information.

WHEN ORDERING SPECIFY: TANTALUM " TRACTION LAMPS.

FACTS OF IMPORTANCE

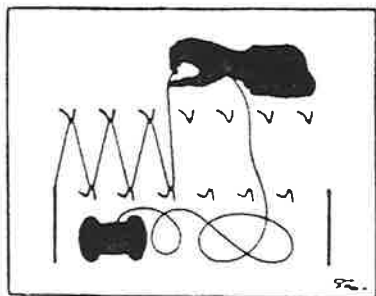
REGARDING

SIEMENS

"TANTALUM" METAL LAMPS

The "Tantalum" Lamp, of which all standard types are listed herein, was placed on the market in 1905, and was the first Lamp with a filament of wire drawn from the solid block. Since that date, the demand for the "Tantalum" Lamp has steadily increased.

The Filament is the strongest in the world, has a greater tensile strength than mild steel of the same gauge, and is wound in one length on a metal and glass "spider" as shown in the cut opposite. Below is reproduced a sketch, shewing, diagrammatically, the system of winding the filament. The Lamp is therefore suitable for every possible use on Land or Sea, and



we are enabled through this exceptional strength to **guarantee** safe delivery in any quantity (see page 17). Further, it is not necessary to handle the "Tantalum" with any greater



care than a Carbon Lamp. Most types of "Tantalum" Lamps burn at an efficiency of 1.7 Watts per C.P. (British), a saving of about 60 per cent. current consumption thus being obtained in comparison with Carbon Lamps. The light of the "Tantalum" Lamp is the nearest approach to daylight of any incandescent electric lamp on the market, and for shops in particular is, therefore, by far the best.

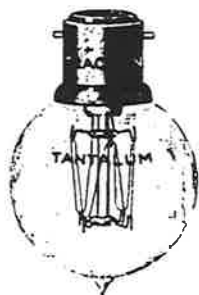
The "Tantalum" Lamp is strong, burns in any position, has a life, on the average, of over 1,000 hours, does not blacken, and retains its candle power during life.

BRILLIANCE—STRENGTH—ECONOMY.

SIEMENS

"TANTALUM" METAL LAMPS TRACTION TYPE

AVERAGE
LIFE
1,000 HOURS
AND
UPWARDS.



WITHSTAND
THE
MOST
SEVERE
VIBRATION.

"RAILWAY" BULB K 50.

ROUND BULBS.

VOLTAGE	C.P. (British)	EFFICIENCY	BULB	PRICE EACH
20-40 20-40	5, 8, 10 15, 25	1.7 Watts per C.P. " " "	K 50 K 60	} 1/9
50-80 90-135 90-120 90-120	16 12, 16 32 50	2.2 Watts per C.P. " " " 2.0 " " 1.7 " "	K 75 K 75 K 100 K 100	
180-240 180-240	32 50	2.2 Watts per C.P. 2.0 " "	K 100 K 100	} 2/3
				} 2/9

For Tramcar Work the number of Lamps to be used in series should be stated.

All "Tantalum" Traction Lamps are suitable for Direct or Alternating Current Circuits, and are supplied with any ordinary type of Cap.

"Tantalum" Traction Lamps should be used in the case of Mill Factory, Workshop, or Printing Installations in all positions where the vibration is severe and excessive—see installation photographs at end of list.

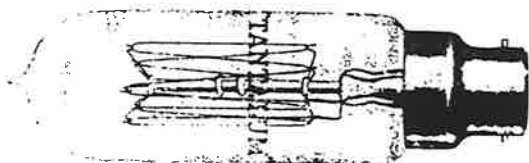
The highest voltage reached in practice in a given installation should be found before lamps are put in, and Traction Lamps suitable for that voltage supplied.

WHEN ORDERING SPECIFY "TANTALUM" TRACTION LAMPS.

SIEMENS

"TANTALUM" METAL LAMPS TUBULAR TYPE

FOR SHOP WINDOW AND PICTURE LIGHTING AND CONCEALED
ILLUMINATION, IN CONJUNCTION WITH REFLECTOR STRIP.



(Half Full Size)

BULB R 4.

VOLTAGE.	C.P. (British)	EFFICIENCY	BULB	PRICE EACH
70-130	10, 16	1.7 Watts per C.P.	R 4	} 2/6
70-130	25	" " "	R 4	

Lamps indicated by Light Type are recommended for Direct Current Circuits only
For Bulb Dimensions see page 3.

Lamps are supplied with any ordinary type of Cap.

Quotations for Reflector Strip complete with Lamps will be
issued promptly, on receipt of enquiries.

FOCUS TYPE

The "Tantalum" Focus Lamp is
designed to give a good downward
illumination without the use of special
reflectors, and is ideal for shop window
lighting where the sources of light need
not be concealed.

VOLTAGE	C.P.	EFFICIENCY	BULB	PRICE EACH
90-130	25	1.7 W. per C.P.	K. 75	3/-

Supplied with any ordinary type of Cap.
For Direct or Alternating Current.



(Half Full Size)

BULB K 75.

FILAMENTS OF WIRE DRAWN FROM THE SOLID BLOCK.



(Half Full Size)
BULB K 4.

SIEMENS

"TANTALUM"

FLAME CANDLE LAMPS

For use with Candle Adaptors
and Opal Tubes.

STRONG AND BRILLIANT.

VOLTAGE	C.P. (British)	EFFICIENCY	BULB	PRICE EACH
20-30 35-60	5 5	1.7 Watts per C.P. " " "	K 2 K 2	2/-
20-60 70-120	10 10	1.7 Watts per C.P. " " "	K 3 K 4	
70-80 85-120	16 16	1.7 Watts per C.P. " " "	K 4 K 4	2/6

Lamps indicated by Light Type are recommended for Direct Current Circuits only.
For Bulb Dimensions, see page 3.

Unless otherwise ordered, Lamps Capped Small Bayonet (S.B.C.)
will be supplied.

MATT OBSCURING LACQUER AND LAMP VARNISHES

(Green, Blue, Red or Ruby, Amber, Yellow,
Pink, Violet, etc.)

These Varnishes are the result of exhaustive
experiments and tests, and are of the
highest quality.

PRICE (Per Pint Bottle).

3/-



SIEMENS "TANTALUM" LUX CANDLES

Patent No. 1070.

20-80 Volts.

Closely Resemble Wax Candles.

Fit any type of sconce. The holder is always concealed by the Candle Tube. Consume only half the current taken by similar Carbon Candle Lamps. Require renewals of the Lamp portion only. (See illustration to right of page.) Can be cleaned without removing the Lamp from the holder.

Do not rattle, owing to rubber star.

Consist of two parts only.

Are paired for Series Burning.



(Half Full Size.)
Candle Complete.



(Half Full Size.)
Lamp only.

Complete, Candle 20-80 Volts (1 in. White tube)	PRICE	5/-	EACH.
Lamp only (20-80 Volts)	"	3/4	"
Candle Tube (White) only, 3½ in. to 5 in. sizes ...	"	1/8	"
" " (Yellow) " " " " ...	"	2/2	"

Candle Tubes are stocked in three standard lengths of opal portions—
3½ in., 4½ in. and 5 in.—**Short, Medium and Long.**

When ordering, state whether Short, Medium or Long Candles are required.

Tubes of intervening lengths—either ½ in. or ¼ in. longer or shorter than the three standard measurements given above—are supplied to special requirements to exactly fit sconces where necessary.

"Tantum" Lux Lamps are recommended for Direct or Alternating Current from 20-55 Volts, and from 60-80 Volts for Direct Current Circuits only.

Lamp only.

**Connector with
Flange.
(Half Full Size.)**

Complete Lamp.
(Half Full Size.)

Possess adjustments which enable varying types of sponce to be *accurately* fitted.

Consume only half the current taken by similar Carbon Candle Lamps.

Are perfectly insulated.

Require renewal of Lamp portion only

Are easily cleaned on removal of Lamp portion.

Tube is rigidly held between rubber padded flange and bulb of Lamp.

Flange as shewn, *insures* uprightness and rigidity of complete fitting.

Are paired for Series Burning.

Complete Candles, 20-80 Volts, 4½ in. White Tube ... PRICE 5/- EACH.

85-115

For "complete" Candles with "5-6 in." White Tube, extra	6/-	9d.
---	-----	-----

"	"	"	"	Yellow Tubes, all sizes, extra on White	"	6d.	"
---	---	---	---	--	---	-----	---

Spare Lamps 20-80 Volts PRICE 4/- EACH.

85-115

[illegible][illegible]

" Yellow	"	"	"	4d.	"
"	"	"	"	6d.	"

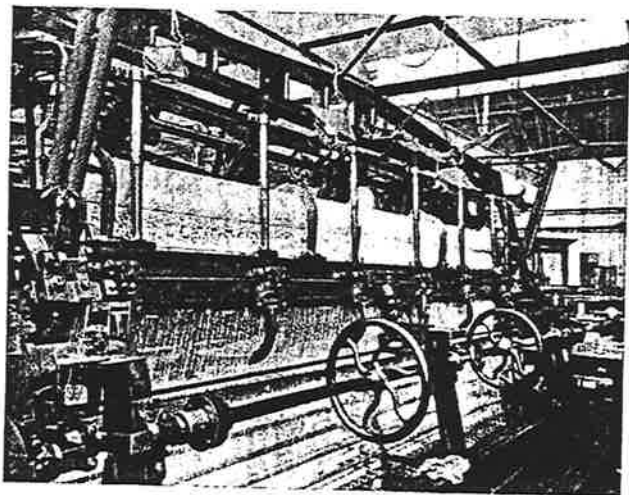
„ Tubes above 4½ in. long, extra per inch, White 1½d., Yellow 2d.

When ordering, state length of Tube required. The standard size is 4½ in.

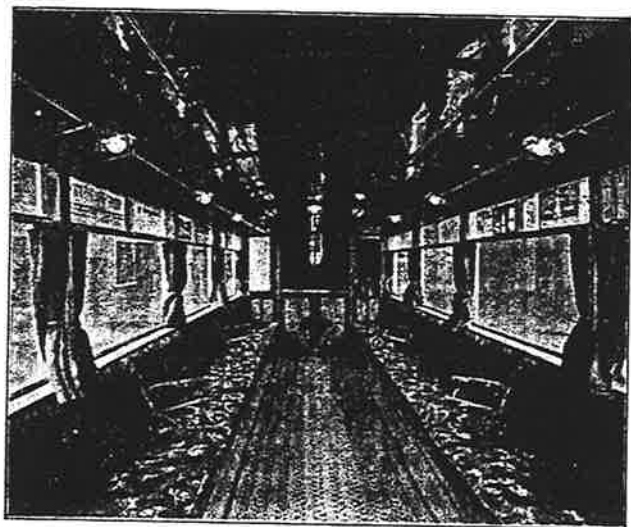
TO FIX:—Insert end of connector in S.B.C. holder, and screw flange firmly down to candle sconce.
Rest opal tube on flange, pass Lamp down tube, and screw gently till fixing is rigid.

Prices of special sizes not listed, or of special connectors to dispense with use of S.B.C. holders, on request.
"Tantalum" Kingolite Candle Lamps, are recommended for Alternating or Direct Current from 20-55 Volts, and for Direct Current only from 60-115 Volts.

SIEMENS "TANTALUM" TRACTION LAMPS



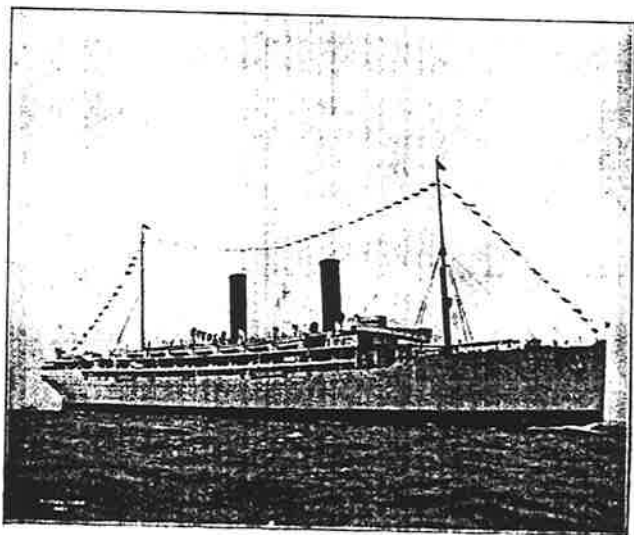
Interior view of a Nottingham Lace Factory showing "Tantalum" Traction Lamps installed on Lace machines.



A Tramcar in which "Tantalum" Traction Lamps of 16 C.P. and Holophane Glassware are installed on the O.S. Wiring System.

HIGH EFFICIENCY.

SIEMENS "TANTALUM" TRACTION LAMPS



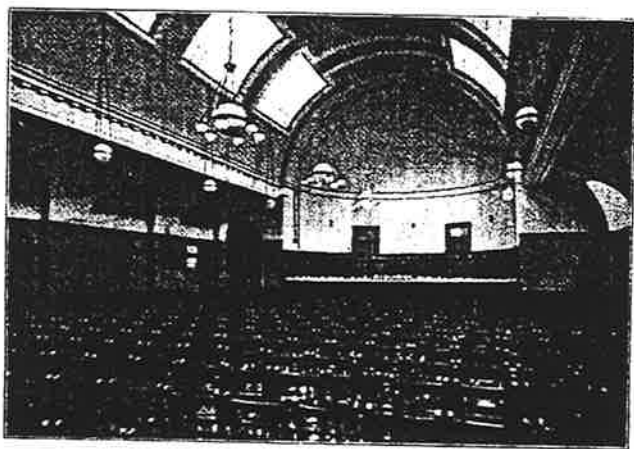
The Union Castle Line S.S. Balmoral Castle, on which "Tantalum" Lamps are installed.



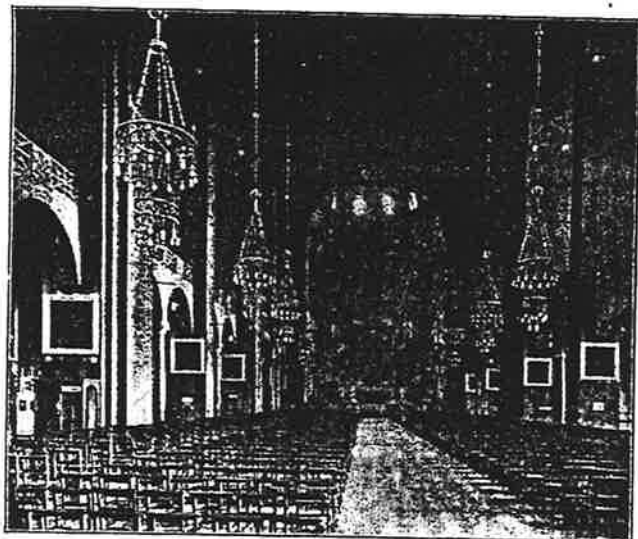
A London Underground Railway Carriage with "Tantalum" Lamps installed.

LONG LIFE.

"TANTALUM" INSTALLATIONS

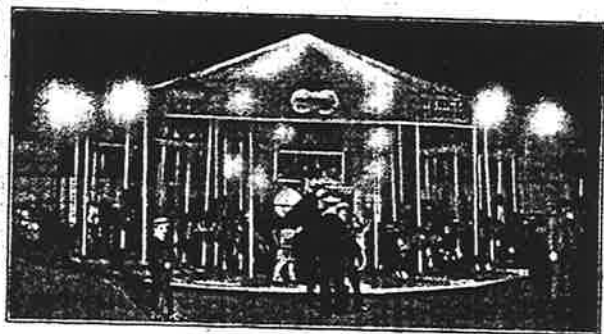


*The Main Assembly Hall of a Technical Institute
with "Tantalum" Lamps and Holophane Glassware.*



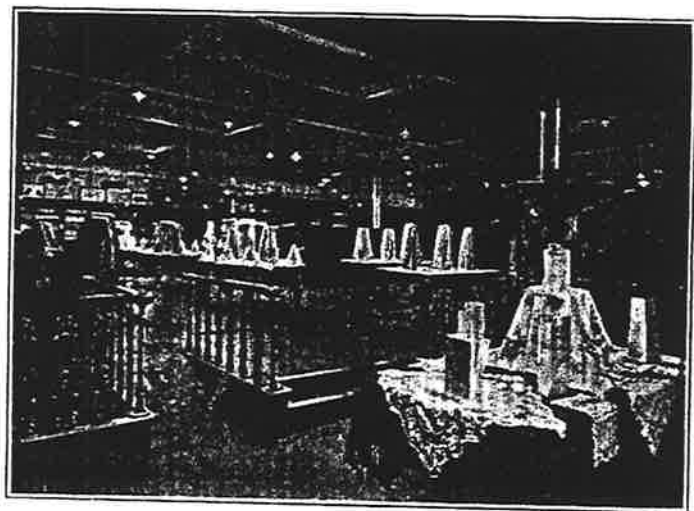
"Tantalum" Lamps in a Catholic Cathedral.

"TANTALUM" INSTALLATIONS



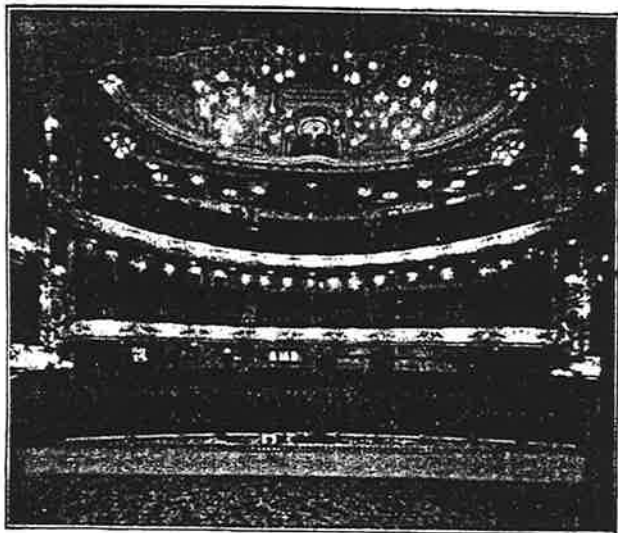
TANTALUM LAMPS

The Strongest Metal Filament Lamps on the market.
Undergoing severe vibration test since November, 1908, on MERRY-GO-ROUND
at ST. KILDA BEACH, MELBOURNE.

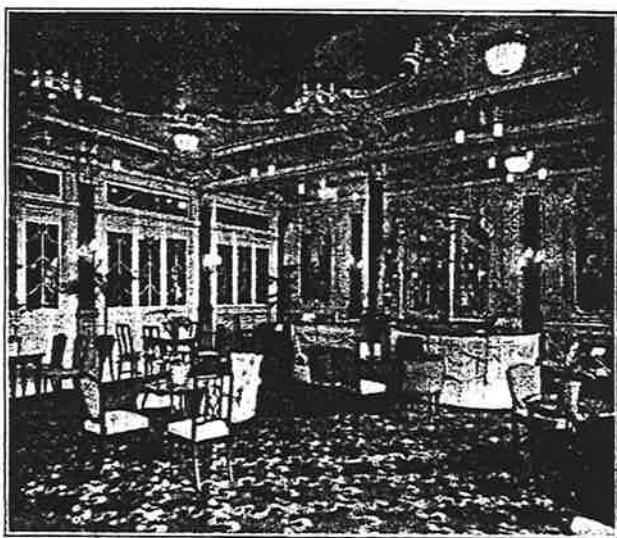


*A North London Drapery Store illuminated by "Tantum" Lamps with
Holophane Reflectors.*

SIEMENS "TANTALUM" THEATRE INSTALLATIONS



Large London Theatre, illuminated by "Tantalum" Lamps.



Theatre Saloon, Louis XIV. style Fittings with "Tantalum" Lamps Installed.

"TANTALUM" LAMPS.

Must not be retailed at less than the list prices set forth in this Catalogue, subject to a discount of $2\frac{1}{2}\%$ for Cash within one month from date of invoice, or 5% for Cash with order or against invoice.

The acceptance of "Tantalum" Lamps from any source of supply will constitute an acceptance of the above terms, and will be held as an agreement by the purchaser with the Patentee not to re-sell except on the foregoing terms, and all orders to be deemed to have been given upon these conditions.

DELIVERY is free in the U.K. on orders to the value of £2 nett and upwards. Sound delivery is guaranteed, but claims for breakage of bulbs must be made on us within 48 hours of receipt of goods, accompanied by Packing Slip and Advice Numbers.

PAYMENT.—Accounts are payable within thirty days of date of delivery of goods, except in the case of shipment, when payment is to be made against bill of lading or other document of title, or through a duly accredited house on presentation of invoice.

This List supersedes and cancels all "Tantalum" Lamp Lists issued previous to January, 1912.

Siemens

Sancti
Gamb.